

**BMP15 Antibody**  
**Catalog # ASC11499****Specification**

---

**BMP15 Antibody - Product Information**

Application	WB, IF, ICC, E
Primary Accession	<a href="#">O95972</a>
Other Accession	<a href="#">NP_005439</a> , <a href="#">257743454</a>
Reactivity	Human, Mouse
Host	Rabbit
Clonality	Polyclonal
Isotype	IgG
Application Notes	BMP15 antibody can be used for detection of BMP15 by Western blot at 1 - 2 µg/mL. Antibody can also be used for immunocytochemistry starting at 2.5 µg/mL. For immunofluorescence start at 2.5 µg/mL.

**BMP15 Antibody - Additional Information**

Gene ID 9210

**Target/Specificity**

BMP15; It is closely related to GDF9.

**Reconstitution & Storage**

BMP15 antibody can be stored at 4°C for three months and -20°C, stable for up to one year. As with all antibodies care should be taken to avoid repeated freeze thaw cycles. Antibodies should not be exposed to prolonged high temperatures.

**Precautions**

BMP15 Antibody is for research use only and not for use in diagnostic or therapeutic procedures.

**BMP15 Antibody - Protein Information**

**Name** BMP15

**Synonyms** GDF9B

**Function**

May be involved in follicular development. Oocyte-specific growth/differentiation factor that stimulates folliculogenesis and granulosa cell (GC) growth.

**Cellular Location**

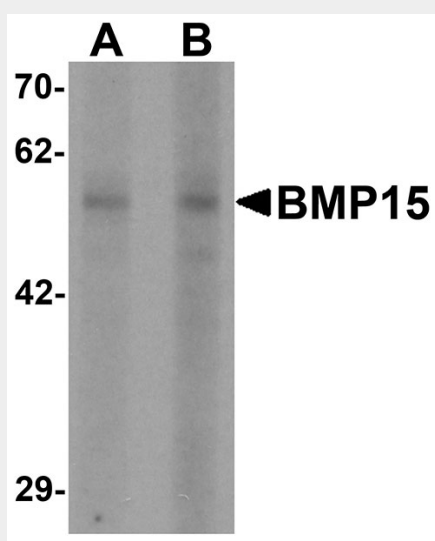
Secreted.

## BMP15 Antibody - Protocols

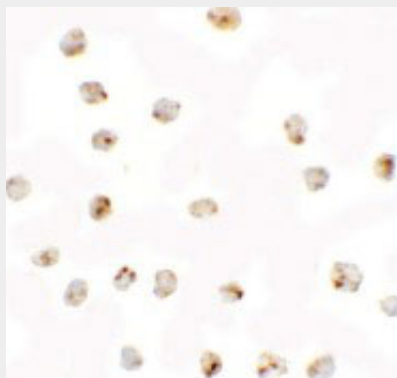
Provided below are standard protocols that you may find useful for product applications.

- [Western Blot](#)
- [Blocking Peptides](#)
- [Dot Blot](#)
- [Immunohistochemistry](#)
- [Immunofluorescence](#)
- [Immunoprecipitation](#)
- [Flow Cytometry](#)
- [Cell Culture](#)

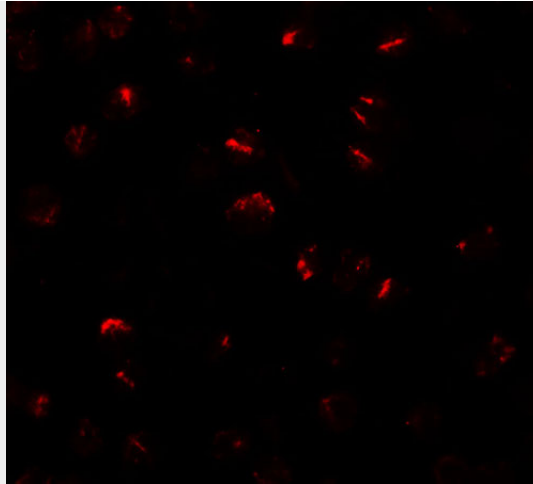
## BMP15 Antibody - Images



Western blot analysis of BMP15 in 3T3 cell lysate with BMP15 antibody at (A) 1 and (B) 2 µg/ml



Immunocytochemistry of BMP15 in 3T3 cells with BMP15 antibody at 2.5 µg/mL.



Immunofluorescence of BMP15 in 3T3 cells with BMP15 antibody at 20 µg/mL.

### **BMP15 Antibody - Background**

**BMP15 Antibody:** BMP15, or GDF9B is a member of the bone morphogenetic protein family which is part of the transforming growth factor-beta superfamily that are involved in embryonic development and adult tissue homeostasis. BMP15 is expressed exclusively in the oocyte. It is an oocyte-specific growth/differentiation factor that may be involved in oocyte maturation and follicular development. Defects in BMP15 are the cause of ovarian dysgenesis type 2. BMP15 could be used as an oogenesis marker to track human amniotic fluid stem cells differentiation into the oocyte-like cells.

### **BMP15 Antibody - References**

Massagué J. The transforming growth factor-beta family. *Ann. Rev. Cell. Biol.* 1990; 6:597-641  
Aaltonen J, Laitinen MP, Vuojolainen K, et al. Human growth differentiation factor 9 (GDF-9) and its novel homolog GDF-9B are expressed in oocytes during early folliculogenesis. *J. Clin. Endocrinol. Metab.* 1999; 84:2744-50.  
Laitinen M, Vuojolainen K, Jaatinen R, et al. A novel growth differentiation factor-9 (GDF-9) related factor is coexpressed with GDF-9 in mouse oocytes during folliculogenesis. *Mech. Dev.* 1998; 78:135-40.  
Galloway SM, Gregan SM, Wilson T et al. Bmp15 mutations and ovarian function. *Mol. Cell Endocrinol.* 2002; 191:15-8.